



WAKE UP TO WEEDS

Woolly Nightshade -

Let's get our collective act together now and stop the spread

Paparoa Press is to present monthly Weed of the Month articles - one of our editorial team has attended NRC workshops highlighting serious and growing (no pun intended) weed problems visible in the local area.

Woolly Nightshade, also known as *Tobacco Weed*, *Flannel Weed* and *Kerosene Plant*, is a native of South America introduced to NZ in the 1880s as an ornamental plant. We all need to be vigilant in reducing the spread of this noxious weed which has the opportunity to heavily infest our district if not controlled. Rarely seen on the west coast ten years ago, Woolly Nightshade is now taking hold and commonly seen in Kaipara.



It is incredibly fast growing from shrub to a 10m tree and forms 'pure' colonies, crowding out and suppressing all other plants, invading pasture,



native forest margins and roadsides. It has large, furry, pungent (kerosene-like), greyish leaves with clusters of purple flowers which develop into yellow marble-sized fruit. A single plant can produce 10,000 seeds which birds spread over large areas; these seeds can remain viable in the soil for up to 30 years. The plant is moderately toxic to livestock and humans, especially children; the leaves have fine hairs which irritate the skin, eyes, nose and throat.



WAG14

22 & 23 August



Come to the Carnival!

The beat of the samba will be still in our ears from the FIFA World Cup in Brazil when Paparoa's Wearable Arts Gala (WAG14) hits town on 22nd and 23rd August. This premiere show has chosen 'Carnival' as a fitting theme to show-case the efforts of the talented designers and models who will take to the catwalk with their creations. If you liked the colour, spectacle and sounds the Brazilians turned on for the World Cup then WAG 14 will have you amazed. WAG has also teamed up with Circus Kumarani to create what is expected to be the most spectacular show to hit Paparoa for a very long time.

Circus Kumarani will bring all their colourful costumes, creative acts, jugglers, acrobats and performers to the Paparoa stage. A specially choreographed opening sequence will set the scene for the wearable artistic creations to follow. Kumarani have developed a stunning performance package that just gets better every year.

Tom Gomes, a professional DJ, is directing the opening sequence with all the verve of his native Brazil. With Tom's talent and Circus Kumarani's skills the audience should be very impressed. This will be a family show with pizzazz!

Such was the success of WAG 2013 the organisers are staging a third show at 8pm on Friday 22nd August as well as the Matinee at 2pm and Gala Show at 8pm on Saturday 23rd. The marquee will open one hour prior for patrons to gather for entertainment and refreshments. Paparoa Lions Club are managing the refreshments for the Gala Show and the food to be offered as part of the ticket price is designed and created by a professional chef. So be prepared for something out of the ordinary. Nibbles and snacks will be available for purchase at both the Friday and Matinee shows.

Get your ticket for this must-see event! Prices range from \$7 for school age children to \$25 per adult for the Gala Show. There's a Family (2 adult, 2 children) special of \$45 for the Friday show and for Saturday's matinee show, plus a 10% discount for parties of 10 or more. Gold Card holder tickets are \$15 for the Friday and Saturday Matinee shows. Tickets from Skelton's Drapery, Tony's Maungaturoto, The Fairy Shoppe Ruawai, Dargaville Sewing Centre and Hammer Hardware Waipuu. There will be no door sales.

REMOVAL – This weed is not too difficult to eradicate- when young it can be readily hand-pulled, slashed and dug out; larger plants need herbicide control by 'cut & inject' method; or cut down with stump treatment and spraying when actively growing. Most important is to prevent it fruiting- remove and dispose of any flowers or fruit that you see. There are very effective herbicides but it is important to revisit the site at least annually to remove any plants that have re-grown or germinated.

MORE INFO: Further details are available on NRC and Rainbow & Brown websites - the best for Northland. We also welcome readers' feedback on how we can get moving ... paparoapress@orcon.net.nz

INSIDE

- Civil Defence - Response Plan 3
- Otamatea HarbourCare..... 4
- Community Focus Groups..... 5
- Photo of the Month 7
- Tides..... 6
- Local Rugby Heroes..... 8
- Out & About 9
- Spotlight on - Rowie Panhuis 10
- In the Kaipara Garden 10
- 100 Artists, 100 Plates 11
- Travels in Tokyo 13
- School News..... 14

Paparoa Press

PUBLISHED MONTHLY BY

Progressive Paparoa Inc. (PPI),
for Paparoa, Pahi, Matakohē,
Whakapirau and Tinopai.

CIRCULATION 1,000

CONTACT US

- paparoapress@orcon.net.nz
- ph 09 431 7144
- PPI, PO Box 107, Paparoa 0543
- www.paparoa.org.nz

ADVERTISING

Rate Card available by email
Booking & Copy deadline:

15th of month

Publication date 1st of month

The Old Post Office Guest House Bed & Breakfast

Deb & Kevin 09 431 6444
www.oldpostofficeguesthouse.co.nz

For a
warm
welcome

- SMALL GROUPS OR LARGE
- MEALS ON REQUEST



Serving the community since 1903

Your Community Matters

with Libby Jones

... VOLUNTEERING

A recent survey, published to coincide with National Volunteer Week, known as the *New Zealand General Social Survey* asked people whether they had undertaken any volunteer work for a charity or organisation in the four weeks prior to the survey. It found that 30.6% of all those surveyed volunteered during this time, with slightly more women than men volunteering. Those not in paid work volunteered more than those in paid work. Older people also volunteered more often with 37.7% being reported by 65-74 year olds, and the least often - 24.8% - were for those aged between 25-34 years.

Communities rely on volunteering or people helping out and Paparoa is no exception. We are fortunate to have so many groups and organisations with people who put up their hands to help in a huge variety of ways. If that is you, Thank You, you add a great deal to our community and to the people who benefit.

Rather than seeing volunteering as doing something to help others, it can be seen as an exchange. While you are helping others using your skills or time, having volunteers throughout our communities means you or your family members can also be recipients. Ways of helping are varied and can be according to your interests and community needs: you may help with school or sports teams' fundraising, with Neighbourhood Watch, by driving for 'Linking Hands', being on a roster at the Library, putting your knowledge to help with running the annual A&P Show, or by being involved with keeping our village garden spaces attractive.

Next month - the benefits for you of volunteering ...

Libby has been involved in many community organisations, in both paid and volunteer roles, in Paparoa and Whangarei, and is happy to share her knowledge and experience through the Press.



List today and take advantage of
our New affordable rate - 2.95%
Call me now.

Leanne Walker

Licensee Salesperson

021 431 619 a/h 09 431 6199

leanne.walker@raywhite.com

Bogue Real Estate Ltd

Licensed (REAA 2008) 09 **425 1654**
www.warkworth.co.nz



Ray White

Matakohē's One-Lane Bridges

Northland MP advises public meeting of progress



The Matakohē Bridge Concern Committee is feeling confident after organising a public meeting which was held on 21st July at the Matakohē Hall. Northland M.P. Mike Sabin addressed a full hall, standing room only! Mr Sabin was keen to report on progress made in the campaign for getting both the approaches to and the roading in-between these notorious bridges re-aligned, as well as new two-lane bridges built. "This piece of roading has not been 'fit for purpose' for many decades and is a 'death trap with accidents waiting to happen' he said.

Mr Sabin's research has shown that, since 1980, there have been six fatalities and many serious injuries caused on this piece of State Highway 12; also that the ratio of heavy vehicles to cars is far higher than for other bridges on State Highways throughout New Zealand. The road is vital infrastructure for the growing economy of Kaipara and Northland as a whole, and the social cost of fatalities and injuries is too high.

The Kaipara Commissioners are fully committed to making this work a top priority for Kaipara in the 2015-2018 National Land Transport Programme. It remains for the four Northland Councils, together with the managers of the Northland Road Transport Committee and N.Z. Transport Agency, to meet towards the end of this year to set priorities for the whole of Northland. The resulting list then goes to Wellington for final national allocation.

Mike Sabin feels that because of the statistics now presented, there is the best chance of the Matakohē bridges being re-aligned in the next Programme and the poorly-aligned and poorly engineered stretch of road will be no longer!

THE KAURI MUSEUM

Real New Zealand Heritage

Calling for entries in the ...

Gilmore Brown Art Awards 2014



**6th September -
5th October 2014**

Entries close 29th August

Entry forms & eligibility criteria available from
The Kauri Museum, Matakohē or at www.kaurimuseum.com

ENTRY CATEGORIES ARE:

- PAINTING & DRAWING
- PHOTOGRAPHY & PRINTMAKING
- ADORNMENTS (eg: JEWELLERY, CLOTHING, ETC.)
- 3-DIMENSIONAL (incl: SCULPTURE, POTTERY, METAL, GLASS ETC.)
- WOOD

Sponsored by:

- Gilmore Brown Limited
- Westmoreland Homes
- The Kauri Museum
- Materials Processing Limited
- Kaipara Lifestyler
- First National A1 Coastal Real Estate, Mangawhai



CIVIL DEFENCE : Paparoa Community Response Plan

With extreme weather conditions in Northland recently, the efforts of Civil Defence groups in Kaipara and further north has been very much in the news as they work to ensure the safety of citizens.

The **Paparoa Community Response Plan** has recently been reviewed and updated. Thanks must go to all those volunteers in the Response Group who do the planning, especially leader of the group Yvonne Yorke, officially known as the Community Response Co-ordinator (and long time member of Paparoa's Volunteer Rural Fire Force). It is the Volunteer Rural Fire Force (VRFF) that has the overall responsibility for implementing the Community Response Plan.

This 24 page plan is available at www.nrc.govt.nz/civildefence, or can be viewed at Skelton's Drapery or the Paparoa Library. It covers the Paparoa township, Pahi Peninsula, Petley Road, SH12 to Hardies Bridge, SH12 to intersection of Paparoa-Oakleigh Rd and Golden Stairs Rd, and SH12 to intersection with Ford Rd.

Hazard Identification: Hazards which we could face in our district have been identified and local resources and contacts listed, eg: where to get medical assistance, generators, emergency fuel, tractors, diggers, trucks, etc.

Welfare Centres: Buildings to be prepared for becoming Welfare Centres are: the Paparoa War Memorial Hall, Paparoa School, Hook Road Community Church, Pahi Community Hall, and Paparoa Campground. These

[Welfare] centres are the places to go for shelter, information and so on.

What You Can Do: It is recommended that every household discuss where they could be vulnerable in possible emergencies, ie: high trees, power lines, flooding, fire, etc. To formulate your own plan, download the *Household Emergency Plan* sheet from www.nrc.govt.nz/civildefence. By having a plan, everyone can feel secure – *"fore-warned is fore-armed"*

Children in particular will benefit from having discussions on all these matters. For a start, have a transistor radio and separate battery available because when the power is out this could be your only link with the outside world.

Helping Others: The Response Group have set up a 'telephone

tree' to help with alerting residents where possible – and the group would like to know of any particularly vulnerable residents who may need urgent medical attention in an emergency situation: please contact Yvonne on 431 6668 or 021 158 2930.

Emergency Contacts:

In any situation where you feel threatened, dial 111 for FIRE, POLICE or AMBULANCE.

For a civil defence alert or enquiry phone:

Yvonne 431 6668
 Deb 431 6444
 Loraine..... 431 7290
 Sherryl Corbett
 for Pahi 431 7127
 Karen Weber
 for Matakohē..... 431 7087

KAURI COAST SEAFOODS

Oysters • Mussels • Smoked Fish

Now agents for UFO Cod Smokers,
Cookers & Accessories

09 431 6684

021 245 8820

540 Pahi Rd
Paparoa



Fresh flounder supplies daily

REMEMBER!



Your
pets
need a
holiday
too

PHONE 09-431 7368
Fine holidays for your pets



Paparoa Lions - Triple support

The latest Paparoa Lions project provided a 3-way benefit for the community - for Otamatea Repertory Theatre (ORT), for St John and for the Lions. The Lions hosted one of the *Wizard of Oz* performances, selling the tickets on behalf of ORT and hosting the evening. All profits from ticket and raffle sales go to St John towards purchase of defibrillators - one for Paparoa and one for Maungaturoto.

Thanks to everyone who supported the evening and congratulations to the theatre and cast for putting on such a great show.

Funds raised at the Music Makers' Concert at Paparoa Hall will also be added to this cause.

BATTENSBY Bros. CONTRACTING LTD

- Ground Cultivation • Silage and Hay
- Fertiliser Spreading • Fencing



Glenn 021 983 734 Ross 021 983 594

Ph: 09 431 6186 Email: battensbybrothers@xtra.co.nz

Matakohē House



Licensed Café
and
Bed & Breakfast
Accommodation

CAFÉ: Open every day for Lunch,
Morning & Afternoon Teas, and Dinners

Check out some Matakohē House specialties:

MUSSELL & KUMARA FRITTERS (to die for)
 NACHOS (spicy beef with sour cream)
 'A LA CARTE' Dinner Menu

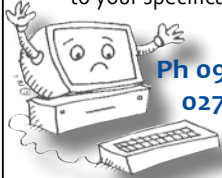
all our food is home cooked

Bookings are absolutely essential for dinners

WE CATER FOR ALL CELEBRATIONS - GIVE US A CALL
 Matakohē House, 24 Church Road, Matakohē 09 431 7091

R & D MACDONALD COMPUTERS

Call Ross with your
computer problems & repairs
He'll even build a computer
to your specifications



Ph 09 431 6221
027 932 8114

email: ross@paradisebreeders.co.nz

PAPAROA FARMERS MARKET

LOCAL GOODS DIRECT
FROM THE PRODUCER



Fortnightly SATURDAYS
9am-noon at the Village Green
August 9th 23rd

September 6th 20th

ph Mary 431 7123 or Graham 431 7209

Planting Re-started

Starting with a waterway 'in our backyard', a different approach towards restoring the water quality in our harbour is being taken by a new group of interested people who have formed an incorporated society – the *Otamatea HarbourCare Society*. This has evolved from previous good works in a wider Otamatea area.

Paparua local Mark Vincent, secretary is the main mover in this movement and has been successful in gathering around him a group of keen and knowledgeable people. His approach is to identify a significant catchment area and concentrate on working with the landowners to get fencing and riparian planting in place. By using a catchment-by-catchment plan and then helping the landowners with accessing funds from a variety of external agencies for fencing along the waterway and helping with riparian planting, the results will be easily seen.

New chairperson Ashley Cullen, whose family has had a longstanding commitment to conservation, likes the idea of tackling this on a catchment-by-catchment basis, so the results will be easier to see.

"We really appreciate that *Reconnecting Northland* has come on board with 1,700 plants so we can make a start this year", said Ashley.

A successful start to planting has been made on the Kenworthy-Thompson property at Huarau.

Anyone who is interested to become involved can join an email mailing list by contacting Mark at mark.cindy.vincent@gmail.com or 431 7353. In addition to planting activities, the Otamatea HarbourCare Society has started a small nursery, and

help with that would also be appreciated.

The Society's lineup is as follows: Ashley Cullen (chairperson), Mark Vincent (secretary), Rex Roadley (treasurer), Graham Taylor, Loraine Rowlands, Don McKay, Sarah Kenworthy-Thompson and Jacque Knight (committee).

Feel free to contact one of them if you want to be part of this. PP



Matakohe School students - putting in the hard yards - riparian planting on 22 July

What is 'Reconnecting Northland'?

Reconnecting Northland is a new region-wide ecological restoration programme which is seeking to link and support projects and groups to create large-scale change for the benefit of our natural environment and our people. The geographic scope of this programme is Te Tai Tokerau / the Northland peninsula as far south as central Auckland city; its work will be based on enhancing environmental and social connectivity.

The initial stages of this bold, innovative and long-term programme are being jointly funded by The Tindall Foundation, the ASB Community Trust, and the HSBC Water Programme. Its implementation is being led by a partnership of WWF-New Zealand and NZ Landcare Trust working in collaboration with the people of Northland – iwi/hapu, community groups, and other organisations of the region – with governance being provided by a Northland-based Steering Group.

No vision and you perish

No ideal and you are lost

Your heart must ever cherish

Some faith at any cost



TAKEAWAY MENU

BURGERS

Cheese.....	\$7.50
Prime Angus Beef....	\$7
Chicken.....	\$6
Vegie.....	\$6
Fish.....	\$6
Bacon & Egg.....	\$7

PIZZAS

BBQ Chicken	Ham & Pineapple
Meatlovers	Hearty Local
Seafood	Vegetarian
Supreme	Cajun Chicken

Small \$15 Large \$20 Available every day

EVERYTHING ELSE

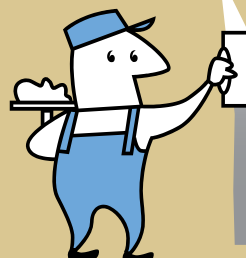
Battered Fish.....	\$3.50	Battered Mussel.....	\$1.50
Hotdog on a stick.....	\$2	Potato Fritter.....	\$1.50
Chips min.....	\$2.50	Sausages.....	\$2
Mussel Fritters.....	\$4	Wedges.....	\$6
Curry Roll.....	\$2.50	American Hotdog.....	\$4.50
Spring Roll.....	\$2.50	Battered Sausage.....	\$2.50
Battered Oyster.....	\$1.50	6 Chicken Nuggets.....	\$3.50
Battered Scallop.....	\$1.50		

HOURS: Wed, Thur, Fri 4pm till late / Sat & Sun 8.30am till late

09 431 7359

TINOPAI PLASTERERS

WE GUARANTEE THE HIGHEST QUALITY FINISH



35 Years experience in...

- GIB Stopping
- Fibrous Plastering

for FREE quote, call us now!
Trevor 021 0300 073



Community & KDC Focus Groups



Youth Facilities - Playground Upgrade on the cards

A keen group of residents met recently with KDC staff to focus on opportunities to provide improved facilities for young people in Paparoa.

The group brainstormed ideas that would fit with Paparoa's natural environment, space limitations, and a desire to have a low impact activity zone. One key area identified was the Village Green playground. It has long been recognised that the equipment caters well for younger children but is not challenging for an older age group. Alan Duxfield, KDC Parks and Recreation Manager spoke of his experience developing public recreational areas using grass mounds, undulating pathways, plantings



and seating that encourages play and complements the existing equipment. Given the limited funds available the group decided to take the Village Green as a blank canvas but using the existing restraints such as the carpark, toilets and play

equipment to develop a concept design for development. The group will meet again before presenting the concept to the community. An onsite open day is to be planned, possibly in the spring, in conjunction with the Farmers' Market. Enhancing the Village Green will not only cater for our young people, it will encourage travellers to stop for longer in the village and use local facilities. If you're interested in having an input to this concept please contact Julie Harper at Paparoa Primary School. PP

Business and Economic Development

Another Focus Group met to follow through on ideas presented at last April's KDC meeting. Three local residents plus KDC Community Planner Annie van Der Plas discussed a desire to see the empty shops occupied and further opportunities for business growth. The group was of the opinion that Paparoa would continue to grow and that this growth should be planned for rather than being ad hoc.

Recent community outcry over what was seen as an undesirable Liquor Store is a catalyst for action. There are a number

of under-utilised buildings that could offer businesses an opportunity.

The Focus Group decided, as a first step, to complete an inventory of these buildings/facilities. There are plenty of examples of communities that have been proactive in promoting their towns as desirable and business friendly places. Later in the year a community survey is planned to seek input into what kinds of business the public thinks would be good for Paparoa.

Discussion also arose of Paparoa as a favourable destination for

retirement and the possibility of establishing a retirement village. Retirement villages retain older people in the community and do attract outsiders looking for a peaceful community in which to spend their later years. Paparoa's many attributes could be marketed to this group. This is a major project but unless the concept is explored and all the pitfalls and benefits examined it will remain as just another idea that might have been.

The meeting was also informed of plans by Northland Inc. (formerly Enterprise Northland)

Whakapirau Update

Despite the ongoing dispute which has caused the dissolution of our Kaipara district council and the consequential governance by appointed commissioners, residents have been given a rare opportunity to identify and prioritise the domestic issues which affect their local communities. The public meeting held at Whakapirau earlier in the year brought a promise to resolve long standing concerns of villagers and we are happy to report that progress has been made.

Firstly, a work order is now in place for urgently needed wharf repairs. An engineer's report has been commissioned to assess all coastal structures. This includes

the local boat ramp which requires major redevelopment and also the foreshore erosion problem. Significant road repairs are ongoing and the drains were sprayed in March, which also saw the recommencement of mowing on the Karaka reserve. The issue of markers on seabed rocks is now being handled by a member of the community in conjunction with the Northern Regional Council.

Of major local interest is the resolution over the future of the historic *Butter Factory* building situated on the wharf (pictured). The Council has finally reached agreement with Brett Taylor,

who now has the option to lease the building for 30 years.

Hopefully this will provide the necessary encouragement for Brett to realise his ambition



Hoped-for restoration of the *Butter Factory*.

katzkutz
quality haircuts and more!
with fair prices!

Also: foils, tints, semi-permanents, crazy colours, permanent waving, blow waves

Open Mon-Fri 9am to 5pm
(8pm Tuesdays)

Call in or phone Katrina on 09 431 9120

Next to Well Kneaded Massage
Maungaturoto

HUBAND
CONTRACTORS LTD

**ROADING • EARTHWORKS
DRAINAGE • SITEWORKS**

For enquiries, contact Shaun:
**Cell: 021 222 0272
Home: 09 431 8339**
Email: admin@huband.co.nz
Registered Drainlayers

and NZTA (Transit) to re-market the Twin Coast Discovery Highway. This will involve an effort to put the highway more in tourist's minds through improved signage and promotion. The focus group will meet again in September and it would be great to involve more business minded people. If you are interested please contact Graham Taylor 431 7209. PP

of returning the building to its former glory ... once again becoming a community asset.

One final concern of all small communities, which has yet to be resolved, is the issue of 'freedom camping'. Council is required to create a bylaw to regulate this activity and is currently awaiting the outcome of legal proceedings in the High Court concerning freedom camping in the Coromandel before calling for submissions on a draft proposal. This should occur later this year. PP

A1 Cats Boarding Cattery

Ken & Faye
Subritzky
548 Pahi Rd



Ph 09 431 7477
www.a1cats.co.nz

Birt & Currie Surveyors Ltd



Local Phone
09 280-9591

**Timely,
friendly &
personal
service**

info@landsurveyors.co.nz
www.landsurveyors.co.nz
PO Box 120 Paparoa 0543

Pahi paradise

*'Tis a resting place for travellers
so the locals tell to me
the prettiest spot on the Kaipara
it goes by the name Pahi*

*Where on earth is that
you'll hear the townies cry
but we don't want them crowding
here
so most will tell a lie*

*Just turn right north of Auckland
can't miss it we boast
they all end packed together
on a crowded east coast*

*We don't have no traffic jams
nor queues at traffic lights
we do not know what grid lock is
or screaming road rage fights*

*At any time we will stop
we love to yarn a while
'tis very few along the way
who would not wave or smile*

*There are some it's true believe
me
will share their fishing catch
and others will insist
you share their veggie patch*

*Most have tried your towns & city
where all are stressed and hurry
but give to me paradise Pahi
where no-one needs to worry*

JCB

Pahi - a place for romance

Many years ago, a young teenage girl caught the eye of a local lad down by the beach at Pahi. She had noticed him as he arrived with his car radiator hissing steam! An eventual meeting developed into a long and happy marriage.

Jim & Dorothy Simpson celebrated their 50th wedding anniversary at the Pahi Hall in June. The hall has many happy memories as the site where they enjoyed local dances and held their engagement party.

Family and friends enjoyed a pot luck lunch, dancing and the cutting of a beautiful cake made by their daughter and grandchildren.



Dorothy and her sister Stella (nee Nicholas) grew up in Paparoa where their father had a little Radio & Photographic Supplies shop near the Old Post Office building in the late 1920's.

And may the wedding of a young local couple, recently held in this special hall lead to the same happy outcome.

Paparoa Primary School PTA Possum Purge

The Paparoa Primary School Possum Purge will be held on the weekend of 11-14 September. Mark your diaries and find your special possum hunting spot, ready for some keen competition for the great prize packages. Every team wins spot prizes. Prize giving Sunday 14 Sept.

Register now - phone the School 431 7370

LANDSCAPE SUPPLIES



Powell Contracting Ltd

OPEN:
Weekdays
8am to 5pm
Saturday
8am to noon

Diggers and Trucks for all your
Earthwork & Cartage requirements

Now Stocking

Daltons & Watkins:

- Potting Mix
- Compost
- Bagged Shell
- Pebble and Scoria
- Bark & Fertiliser



We Also Stock

- | | |
|---------------|-----------------------------|
| Bulk Compost | Timber |
| Topsoil | Posts |
| Sand | Battens |
| Riverstones | All grades of metal Nails & |
| Lime Chip | Staples |
| Blue Chip | Pro-max water tanks |
| Bark | Aqua water tanks |
| Post Peelings | Drain coil |
| Woodchip | Culverts |
| Builders Mix | Hurricane Gates |
| Cement | Full range of |
| Easi-crete | StrainRite fencing supplies |

Powell Contracting Ltd, 2088 Paparoa Valley Road, Paparoa
Ph/Fax 09 4316 331

g.a.s. Paparoa

Safety
First

- Petrol, Diesel & Oil
- **LOWEST** priced milk
- Great variety of Bait



Local tides for August 2014

AUGUST TIDES - CALCULATED for PAHI-WHAKAPIRAU

DATE	LOW	HIGH	DATE	LOW	HIGH
1st	7.57am	2.16pm	17th	9.41am	4.11pm
2nd	8.36am	2.56pm	18th	10.38am	5.13pm
3rd	9.20am	3.42pm	19th	11.42am	6.24pm
4th	10.11am	4.37pm	20th	12.53pm	7.37pm
5th	11.10am	5.42pm	21st	1.59pm	7.47am
6th	12.17pm	6.53pm	22nd	2.54pm	8.54am
7th	1.26pm	8.02pm	23rd	3.37pm	9.42am
8th	2.30pm	8.28am	24th	4.16pm	10.22am
9th	3.28pm	9.29am	25th	4.51pm	10.58am
10th	4.20pm	10.24am	26th	5.24pm	11.32am
11th	5.09pm	11.15am	27th	5.55pm	12.04pm
12th	5.57pm	12.04pm	28th	6.28pm	12.36pm
13th	6.44pm	12.52pm	29th	7.01pm	1.09pm
14th	7.31pm	1.39pm	30th	7.37pm	1.44pm
15th	8.00am	2.27pm	31st	8.03am	2.22pm
16th	8.49am	3.17pm			

John & Nicki Eddy
09 431-6302

Mon-Fri 6.30am-6.30pm
Sat 7am-6pm; Sun 7.30am-5.30pm

Photo of the Month

Matakohe resident, James Hancox has offered PP a selection of his very fine photographs for publication. We thank James for his generous offer. This is timely as we plan to run a *Paparoa Press Photo Competition* for readers later in the year.

James also wishes to make a selection of images available for Paparoa locals to download free of charge- go to james@jameshancox.com where you'll also find more on James' interesting story - he was featured on TV One *Good Sorts* recently. PP



Kevin's Shed
panel beating & repairs

Just ask

027 642 4991

09 431 6444



3245 Paparoa-Dakleigh Rd

Pets in the Valley

The things you find ...



Recently we had a farm dog in the clinic which had vomiting and diarrhoea, not an uncommon occurrence especially at this time of the year when there are lots of cow membranes around. Known as "garbage-can enteritis" a few days on a drip usually settles things down and off home again they go. Unfortunately this dog returned a few days later and despite not being

able to palpate anything abnormal in its abdomen I decided it was time to have a look inside. After a bit of rummaging around I felt something in the large intestine, an incision revealed some plastic which when extracted turned out to be the plastic from a nappy! It took two holes to remove it all and a few days later dog was happy again.

I guess only dogs could understand the appeal of eating such an item. I could understand the meat wrapper I removed and the corn cob, but no, not the nappy. However my gastric adventures pale in comparison to those of a colleague I spoke with at the staff dinner. She had worked in Dubai for several years where the rich oil barons can own some special pets. She removed a harness from the stomach of a vomiting lion which was casually led into the clinic one Friday morning!

Keep warm, Janine

FENCING CONTRACTOR

For all types of fencing, stockyards, handyman work, tree felling, tractor work etc.



phone

Mike 09 431 6509

027 203 2694

email

mandsplunkett@slingshot.co.nz

FARMWORK SERVICES LTD



**NORTHLANDS BIGGEST
BED OUTLET STORE**

- 1/2 PRICE BEDS
- SECONDS-SAMPLES
- SLAT BEDS
- PILLOWS
- TOPPERS
- ADJUSTABLE BEDS
- BEDROOM FURNITURE



**STOP BY AT ELLE CEE'S AWARD
WINNING CAFÉ- WHEN YOU COME.**

(09) 439 2243

18 Freyberg Road, Ruawai

ROTARY CLUB of MAUNGATUROTO and DISTRICTS (Inc)

Serving the area from Matakohe, Paparoa, Maungaturoto, Waipu, & Kaiwaka to Mangawhai



Wanted!!! Household Goods and Furniture for Rotary's Biggest Fundraiser "*The Grand Auction*"

held annually in March - proceeds go back into our community goods can be picked up and stored

Please ph: Eric Parsons, Mangawhai 09 431 4874

Keith Shadbolt, Maungaturoto 021 402 122

ROTARY - GOOD PEOPLE, HAVING FUN, DOING GOOD THINGS

Lance Keay Contracting Ltd

- Effluent Pond Cleaning
- Single Pass Tillage & Seeding
- Cultivation
- Fertiliser Spreading
- Hay & Silage Mowing
- 6 Ton Trailer

Taipuha RD1, Paparoa, 0571
09 431 6308 021 383 908
lance.k@extra.co.nz

Local Rugby Heroes Runners-up in Taniwha Shield

The Otamatea/Rodney U13 rugby team utilised Paparoa's Sports Pavilion as a base while preparing for the week-long *Dave Culham Taniwha Shield* Tournament held in Kaiwaka. Two days of team-building saw them perform brilliantly, winning against Hokianga 35-0; then only narrowly going down 18-7 to the Whangarei Grizzlies. On the third day a must-win game against Mangonui saw them come back

from 12-5 behind at halftime to score two unanswered tries and win 17-12. The semi-final was played against Northern Wairoa who came out firing which made for a great forward battle with the game seesawing until Otamatea/Rodney's winger Preston Allatt scored a last minute try to win the game 17-10 and secure the team's spot in the final.

The final was played in front of a large crowd against the Whangarei Grizzlies, both teams came out very focused and hungry for the title: the Grizzlies took advantage of a few Otamatea/Rodney errors and won 22-12.

This year's Otamatea/Rodney team has done the entire Sub-Union proud by not only placing second in what is a very tough rugby tournament but also having seven players selected to trial for the Northland Roller Mills



Team haka

rugby team. A special thanks to everyone who has supported the team, it is really appreciated.

Team members from our district were Denzel Peeni, Petuera Kingi, Alex Parr, Isaac Sheppard, Zack Hamlin and Preston Allatt; ex-Paparoa boy Mike Peeni was head coach with Bron Hames



Speedy Isaac Sheppard strides it out.

First Aid and Strapper, and Paparoa's Johnny Peeni strongest supporter and manager! A good result all around!

Ruawai Homekills

Full service slaughtering & processing of Beef, Sheep, Pigs, Deer, Goats

All Beef aged

Salami ▲ Bacon ▲ Ham ▲ Sausages

Hamburger Patties

Traditional Manuka wood smoked Bacon, Ham & Salami

Over 25 years experience

For prompt & professional service contact Wayne or Annette

09 439 2020 • 021 401 934

ruawaihomekills@gmail.com
Information packs available

Covering the Kaipara and Whangarei regions

You won't go away hungry!

THE CRUISER BAR and GRILL

- Wholesome, affordable meals
- Fully licensed
- Family friendly
- Inside-outside dining
- Private functions



In the
village,
Paparoa
Valley
Road

OPEN WEDNESDAY to SUNDAY, 5pm 'TIL LATE

ph 09 431 6918

MUSEUM MUSINGS ...

Today, when we think of an engine we are likely to visualise a machine driven by internal combustion, fuelled either by petrol or diesel. At the beginning of the 18th century; wind and water were the natural providers of propulsive force that could supplement man- or animal-power. By 1712 Thomas Newcomen had produced a steam powered rocking beam engine which was developed to drive the pumps that kept mines from flooding. By 1781 James Watt had patented an engine which produced 'continuous rotative motion'. This was the key that unleashed the industrial revolution, transforming manpower to mechanical power. Watt's 10-horsepower stationary engine was extremely versatile, providing the energy to drive a wide range of machinery. It was also portable and could be sited anywhere where there was water, with wood or coal available. Steam provided the motive power for ships, railways, and by the late 1860s, traction engines.



The Kauri Museum's 120hp Tangye

The rapid development of the 'new world' by early settlers owes much of its success to steam. Our Kauri Museum has a number of fine examples of steam power including the massive 120hp Tangye engine (pictured) which powered the Whangarei Timber Co. mill from 1917 until 1971. There is also the portable Davey Paxman unit depicted in the sawmill at the museum as driving the entire mill operation display. This engine consumed 3,637 litres of water and 2.22 cubic metres of wood per day! It took 40 minutes to build up steam every morning. Only the awesome majesty of silent power and that hot wet smoky aroma is no longer there to remind us of the force behind our heritage.

A Potted History of the Paparoa Press ...

After 18 years with Paparoa Press being very much part of the local scene we reflect on its early beginnings:

Paparoa Press was the brainchild of retired architect Ron Grant (although there had been earlier community papers). In spring 1996 Ron edited the first 4-page PP with the intent of giving the community a voice and to raise funds for *Keep Paparoa Beautiful*. Some original advertisers are still operating but many have moved on. As a quarterly publication the early PP contained news, community contacts and a directory of community services. It makes interesting reading as a number of the names mentioned are still active in community affairs today. Copies of all editions of Paparoa Press - going back to the very first - are available to view at the Paparoa Community Library.

Ron continued as editor until autumn 2000 and by that stage it was printed in one colour. From the winter of 2000 Tom & Pat Sutton took over and expanded the quarterly PP to 6, then 8,

then 12 pages. By summer 2005 it even reached 22 pages. Under their direction and with a team of willing volunteer writers and folders PP became a very well established part of the Paparoa community. Income after print costs went to *Keep Paparoa Beautiful* for beautification projects all around the Village.

When Tom and Pat decided that 11 years was a pretty good stint they handed the reins to Progressive Paparoa Inc. PPI had been producing the *BizBuzz* news sheet in the months between PP editions, and so decided to fold that and take on the challenge of producing PP as a monthly. Since then PP has extended to a regular 16-page publication with front and back covers in full colour. Advertising support has been great and proceeds after print costs go to PPI funds. With *Keep Paparoa Beautiful* now under the PPI umbrella, funds are still used for beautification projects in the

village. PP is now printed locally by the PPI Print Shop. Costs have risen but the PP is still largely a volunteer effort with a small team scratching their collective heads every month to produce a PP we can be proud of.

A community paper is the heart of the community as it allows communication, connectivity and a sense of belonging. PP has been fulfilling this role for 18 years and plans to continue for many more.

HSB BUILDERS LTD



- Fixed priced housing contracts
- Roofing
- Concreting

www.hsbbuilders.co.nz

- Hayden 021 506 260
- team@hsbbuilders.co.nz



BulbsDirect

OPENING AUGUST 20TH



Flower bulbs direct to your door.

www.bulbsdirect.co.nz

OUT & ABOUT around the District

If you think it's been wet, here's the evidence: figures recorded at NRC's rain station at Ariel Farm - 26 Jun 37.5mm; 7-12 Jly 179.5mm; 19 Jly 40mm. The heaviest single rain event was 6-9pm on 19 Jly when 27.5mm fell in 3 hours! But a similar rain station at Brynderwyn recorded 48mm in the same period. No wonder the road slipped.

Our condolences go to the family of Warwick Fenwick who was born in Paparoa in 1925 and passed away recently.

A farmer in Franklin Rd recently lost 2 ewes with lambs to a stray dog. Dog owners should be aware that stray dogs seen worrying sheep can be legally shot.

Have you been to Dargaville's Anzac Cinema? A real cosy atmosphere, friendly staff and great movies - just the thing for these winter evenings. Movies are listed in Kaipara Lifestyler, at www.flicks.co.nz or you can phone 09 439 8997.

Paparoa Press is distributed in the Paparoa/Tinopai areas by our local Rural Mail contractors who do a great job. In Maungaturoto RD1 (western)/Whakapirau areas it is distributed by volunteers. Naturally it's desirable for as

many people as possible to receive a copy. Every copy costs money so, to maximise PPI funds for community projects, we ask that - if you normally receive your copy in the mail - *please don't take extra copies* from Paparoa Store or other outlets. This will leave more available for casual visitors. We often receive positive feedback from visitors on the quality of the Press and the great community it represents.

2014 Smokefree Rockquest - local band *Mile Zero* succeeded in winning the People's Choice Award at the Northland Regional Finals on 4 July. Well done guys!

Possum Purge - get your team together for the Paparoa Primary School PTA annual Possum Purge on 13-14 Sept, ph 431 7379.

OHS Arts Festival - Otamatea High School's annual festival is on Thu 21 Aug, 7.30pm in the school hall. Drama, music, fashion, kapahaka, art & film. Tickets at school office from Aug 7.

The Paparoa Hall AGM is on Mon 11 Aug at the Hall, 7.30pm. Everyone is welcome.

The next community dinner run by Paparoa Sports & Recreation Assoc. is on Sat 30 Aug at the Sports Pavilion, ph 431 6432. PP

One handprint-sized area of tread is all that's connecting each of your tyres to the road...

Winter is here, so it's more important than ever to check your tyres.

See Dean and Reece for your free tyre check.

Garnetts Tyre Service

2 Gorge Rd, Maungaturoto. Ph 09 431 8255.

BRIDGESTONE TYRE CENTRE

PLUMBER

Kaiwaka to Ruawai

- 30 years' experience
- All plumbing services including new housing and maintenance



ANDREW KENNY
ph 027 642 8320

"No job too small"

Ross Latto

**LICENSED
BUILDER**



House construction, alterations,
renovations, general repairs

Ph 09 431 7442 021 772 766

PO Box 17, Paparoa

VRFF News

The Paparoa Volunteer Rural Fire Force AGM was held on 21 July. We have had a busy summer, new recruits and some exciting trainings throughout the year. Noel Futter remains on as CFO with Cohan Yorke doing another year as DCFO. Pete Risbridge takes on a new role as Station Officer/Training officer. If you have any questions regarding the Fire Force, don't hesitate to give one of us a call. And of course we're always keen to hear from anyone who'd like to join the VRFF. For the past 3 years, our main fundraiser has been cattle raising. We currently have 2 steers that are just about ready to sell and we're looking for two more. We're wondering if there are any lovely farmers out there who would donate a white-faced weiner or two to a good cause? If you would like to help us out, please call Graham on 431 7545 or Yvonne on 431 6668.



Rhoda Morrison

Your Full Time Local Real Estate Agent

Top Rural Salesperson
last 4 years Region 1

Listing to sell NOW

09-431 6912
0274 800 691

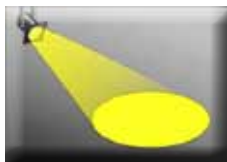
rhodamorrison@xtra.co.nz
www.roperandjones.co.nz



first
national
REAL ESTATE

Roper & Jones

Dargaville Realty Ltd
Licensed REAA 2008



Spotlight On ... Rowie Panhuis

Born in Warkworth and brought up on the Mahurangi River, Rowie Panhuis comes from a 'green fingered' horticultural family. Her grandmother was a florist, her father's side of the family grew citrus, and after selling the family farm her father started *The Grange Garden Centre* in Warkworth. It was here that Rowie discovered her love of growing herbs, gradually widening her expertise to a wider range of plants.

After a spell overseas, Rowie met and married Peter and they found Paparoa where they rented a house for two years on Panui Station in Paparoa Station Road. An opportunity then arose to buy an old church at Wharehine near Port Albert where they lived for ten years, but somehow Paparoa beckoned again and in 1994 they purchased *The Pines*, a very special place with an interesting history. This enabled them to achieve the lifestyle they were seeking in a caring and supportive community, and where their children thrived happily at the local schools.

Rowie soon established her popular plant nursery in an old cowshed, supplying plants to the local store and at the same time becoming a valuable asset to the community. One of the original members of the *Keep Paparoa Beautiful* group, which she continues to this day, Rowie was also for many years

a stalwart supporter and aide to the *Kaipara Rockers Rock 'n Roll* Group. Not one to rest on her laurels, she and Peter did much

the initiator of the Paparoa Press and another original member of *Keep Paparoa Beautiful*. Rowie and Peter embraced this chance,



keen to stay in Paparoa and close to the salt river which they both love with it's bounty of kaimoana. In Rowie's words, "I would like to re-establish my nursery here, diversifying and propagating a variety of coastal and bird-attracting plants. However there is still much work to be done to set things up. In the meantime plants will continue to be sold from the Paparoa Store

as usual. I would also like to thank the Paparoa community for all their support and friendship over the years, and look forward to continuing our life in Paparoa".

to improve *The Pines* including the restoration of Miss Pharoah the Governess' cottage for use as a Bed & Breakfast, many guests becoming life-long friends.

After 20 happy years and an empty nest, it was time to downsize and as one door closes another opens, and the opportunity arose to purchase *Salt River* a Pahi property designed and built by Ron Grant,

And on behalf of the community we thank YOU Rowie for all the time and effort you give to our community, especially the beautiful planters of colour which brighten our village green every day of the year. PP

In The Kaipara Garden ...

Rain and wind with warm sun in between ... and I picked the last of my tomatoes in July! After the warmest June on record, dams all around had filled, although when digging in the garden soil was still very dry below the first eight centimetres. And now we have saturated soil following the wild July storms and record rain!

Just a few garden chores to do – cut back those perennial salvias, put in some deciduous hardwood cuttings before they begin shooting again.

Now its time to go through plant catalogues and I have just received my latest one this weekend.

So far my list has – *Teddy Bear* sunflowers – I love these, they grow about 70cm, so not too tall and so tactile with soft fluffy cushion-like bright yellow flowers.

Sweet peas – *Old Spice Antiques* with their fragrant flowers and they can take the heat better than some varieties. I do save seeds each time but need to keep the vigour up by planting some new ones.

Gallardia – will try a new one *Arizona Apricot* as the *Arizona Sun* from last year is still flowering and has been a great drought survivor with a great autumn–winter show – and it's a perennial! Now for vegetables – I'm going to try kale as I'm told it's great, *Mortgage Lifter* tomatoes always do well with nice large fruit, butternuts, spinach, carrots to name just a few. The seed potatoes are put out to sprout.

Planning is exciting as it's the thought of what will happen next growing season – never mind that not everything will be perfect!

Stella Clyde

art ... 100 artists - 100 plates

The Paparoa Art Group members have now made our contribution to the Quarry Art Centre in Whangarei. Their enterprising method of fundraising is to have a potter make 100 plates for 100 artists to decorate. These are then exhibited in the Yvonne Rust Gallery and on Trade Me, where they are sold by auction. The whole process is over very quickly; unfortunately it's now too late for you to bid. This was our first year participating, I'll tell you about it in plenty of time next year!



Terra cotta plate decorated by Paparoa artist Victoria Bidgood. Still life in acrylic paint with fine glitter accent.

It is always exciting to see the very different approaches creative people take when given a similar starting point. Plates were embellished with paint, resin, fabric, buttons, thread, flax, metal, wire and found objects. Some were carved before firing or glazed then fired; others were built into larger structures and were barely recognisable.

The value of each artist's contribution of course depends on the value given to their work by the market and the opportunity cost of the artist's time. Some of those whose livelihood comes from their artwork find these costs too high, a position that must be respected. Many, however, are in a position to make this modest contribution to the Quarry which is always worth a visit to its classes, gallery or shop.

While you are in Whangarei this month, do call in to the Whangarei Art Museum in the Town Basin to see a splendid exhibition of Taiwanese contemporary art; an important exhibition, not to be missed.

Helen Budd

Calling all artists ...

GILMORE BROWN ART AWARDS 2014

6 September - 5 October 2014 at The Kauri Museum

An open-themed exhibition and competition which is held to showcase the creativity of the Kaipara.

This is the third annual staging of this event- previously known as the **Kaipara Art Awards**- by The Kauri Museum at Matakohē and is well worth a visit. The Kaipara has a vibrant arts community and this exhibition is the ideal opportunity to see works from both established and emerging artists from around the district.

For you artists out there: Entries close on August 29 and entry forms are available from The Kauri Museum. See further details page 2. PP



What's Hot

Residents getting behind the KDC Focus Groups to plan exciting developments for the community

What's Not



Mud, mud, mud ... from an exceptionally wet July

Arty Farties

The year is half-way through and summer thankfully not too far away. Calving has started and we're all busy. Veggies are growing well in our gardens, and we are all pleased with them.

Maungie Tanks repaired our main tank so we have water again for our summer gardens. Cheers, Mike S.

Jenny MacKinnon has donated a white picket fence for the roadside frontage, so the pallet fence will shortly disappear.

We are planning workshops:

- Australian indigenous art (dot painting)
- Maori basket weaving
- Garden Sculpture with Kaiwaka's Deva.

Our Patchwork Group is still growing and we're all doing some unique and beautiful work. Beginners welcome – recycling, sewing, knitting – incorporating lots of things.

For our upcoming Garden Sculpture Workshop we will need lots of bottles: plastic bottles, wine bottles, beer bottles, etc.

Any queries, please phone Anne Shanks 431 6229.

Paparoa War Memorial Hall Society Inc.

ANNUAL GENERAL MEETING



Monday 11th August
7.30pm at the Hall
All welcome

Carpet Layer

20 years experience

phone Ian Ross

09 431 6939 a/h
027 4996 413



Paparoa Store

Proudly Supporting Paparoa

OPEN 7 DAYS

Monday-Saturday 7am-6pm

Sunday 9am-5pm



We stock a great selection of
CONFECTIONERY, ORGANIC, DELI, MEAT,
FRUIT, VEGES, FROZEN GOODS, BEER, WINE
and a wide range of grocery items at excellent prices

DVD's \$1 to \$8 per night
EFTPOS NZ HERALD POST CENTRE

Phone / Fax 431-7320
Cnr. Franklin Road and State Highway 12

Country Cutz

Gay Northcott
The Salon - Paparoa Village



Fully qualified
and professional
friendly service

- Ladies & Mens Cuts
- Perms, Colours
& Highlights
- Weddings

Open Thurs-Fri
Wed & Sat by appt

After hours phone Gay 431 7007
Salon 431 7255

The Glass Guy



Phone Colin
09 431 6595

MANGROVES, MUD & THE KAIPARA

Over the last few months PP has featured a very interesting series by Neville Rosengren on the Kaipara Harbour and the causes of mangrove proliferation. Paparoa Press thanks Neville for his informative contributions. This month, to continue the discussion we have a layman's perspective from a local resident:

My 'take' on saltwater gorse - aka mangroves

Let me start by saying that I am a layman and the comments I make are not based on scientific research, rather on common sense observations and experience. My attitude to the environment is that those of us who have the privilege to be custodians of land have a responsibility to care for that land. While farming, I did my bit by strategic plantings to endeavour to control erosion as much as possible.

Even though our farm was far removed from the harbour there were headwaters of two streams that ended up in the Northern Wairoa River.

A white paper of one foolscap page and a Government of the time not willing to question the findings has resulted in the destruction of some of our most beautiful scenery. It horrifies me to see the results of poor decisions made with regard to the protection of mangroves around New Zealand's coasts.

(NOTE: see also Reference List provided by Neville Rosengren - page 14)

The white paper stated that the mangroves would protect young fish and thus enhance the fisheries - "yeah right" - it was the wrong variety! It does not take a rocket scientist to realise that there is absolutely no protection for small fish on dry silt, which is what happens when the tide goes out from around the roots of this stupidly protected species. The species that could offer this protection is the mangrove that grows in the tropics which has aerial root systems that form cages that remain in the water and do in fact offer protection to small fish, not this silt trapping monster that has been so avidly protected. Several years ago a member of the Raglan Harbour Restoration Group spoke at a public meeting here in Paparoa and outlined the success that they have had there. First, Raglan is a much smaller harbour than the Kaipara and they have been able to get land owners to fence off their swamps, creeks and wetlands and to plant

natives between the fences and the harbour, thus restricting the flow of silt into the harbour and allowing the tide to deal to the mangroves by flushing out the accumulated silt and depriving the mangroves of their food source. The result was a dramatic improvement of water quality, leading to a huge increase in the number of fish being caught and large quantities of mangroves dying, sandy beaches returning and a more beautiful outlook generally.

Should this protection continue, in a very short space of time we will not have a harbour to enjoy. All the fish will have deserted it. Protection needs to be removed so that eradication can start and our harbour returned to what it was originally. Of course there needs to be a willingness of harbour side land owners to do their bit as well; this would probably require a certain amount of Government assistance.

Let's act now before it is too late.

Alex Tetzner

Crompton Engineering Ltd

Phone/fax 09 439 2393
31 Jellicoe Road, Ruawai



Hay Racks
- covered
or uncovered

Palm Kernel
Trailers



website: cromptonengineering.co.nz
email: crompton.eng@xtra.co.nz

Letters from the Old Post Office

Dear Readers,

Call me a pedant, call me picky, or even worse an English teacher. But please, tell me that it was a blue skied and beautiful day, that the sky stretched forever, affecting you so deeply you felt joyous for hours.

Not, it was like ... a nice day, it really impacted on me. What is it with *like* used in this way? A word used as some sort of shield between experience and reality? Simply a filler. Surely, *like* should be used in terms of affection or as a comparison. What *is* being said when we say it's "*like*" a nice day? That it's quite similar? That it's not really an original? That it's fake? Is this the effect of the media on modern youth, that everything is seen as if on a screen? Not really true?

Then, dear reader, take *impacted*. (Or not.) Now, I always thought *impacted* was something that happened to a wisdom tooth. Painful and ingrown. Or the impact suffered when hit by a train. The Oxford dictionary defines it as "the action of one object coming forcibly into contact with another".

Not, "that speech really impacted on me."

What? Was the feeling being created so physically painful that it has left long term damage?

Consider this:

The teenage Juliet on her balcony in summer (not Northland's winter):

Like I like you but its like no joy of this like contract
Its like too rash, too like unadvised, like sudden?

Romeo telling the Friar of this meeting:

Friar, its like I was partying with mine enemy when it was,
like I met this sheila, woohoo, she really impacted on me,
like big time ...

Actually ... it's like growing on me, like its kinda working, you know?

POST SCRIPT: apparently we dont need apostrophes now either.

Deb C

TRAVELS IN TOKYO ...

During a conversation with friends in Perth last year we discussed our *bucket list* which was interesting and varied. In particular the idea of boating along the canals of France seemed to be super appealing and thus the planning began. Eventually an itinerary eventuated for a seven week trip including Tokyo, France, Ireland, England and Shanghai.

Leaving early in May our first stopover was Tokyo, Japan. First impressions were of the cleanliness and organisation of everything, the politeness and helpfulness of all service staff who were beautifully attired in very dressy uniforms, and workers who were continually sweeping streets, railway stations etc. The work ethic is very high and failure often leads to suicide by men in particular. Only two weeks annual holiday is allowed, and they have no public holidays.

Even in this huge city of 13 million people there were lovely green areas, with many, many clipped hedges and topiary bonsai trees and flowers to alleviate the hard lines of the modern buildings.



And speaking of railways, trains are *always on time* and we managed after one foray to get ourselves back to the hotel by the *Metro* train system in rush hour, forever remembered as sardine time! Getting on was not a problem as going with the flow seemed the simplest option. The

worry was how to get out again when and where we wished? Visiting some of the attractions such as the *Meiji Shrine, Tokyo Tower* and the *Palace East Gardens* was done on a small tour bus, the history and culture most interesting.

A definite highlight of our stay was a visit to *Fujiyama*, otherwise known as the shy mountain as she is so often hidden by cloud. The trip by coach through lovely rural areas was enlightening, now individual houses instead of the apartments of the city and suburban areas.

There were lots of paddy fields, many of the houses with their own small field which elderly folk were busily tending and harvesting. As we neared *Mt Fuji* we caught glimpses of her among the clouds, crossing our fingers that

they would pass by the time we arrived and delighted to find it a perfect sighting. Snow came right down to the viewing point with the lady in question towering high above us. A gondola ride gave great views looking back over *Fuji* and the surrounding area, including a lake which we

later cruised. Our return trip to Tokyo was via The *Bullet* train gently cruising at 300+ kph.

Dining Japanese style



Last but not least was a wonderful reunion with two Japanese friends and their families, sharing a traditional Japanese *Kushiage* meal of many courses in a very ancient restaurant building, the challenge being able to sit on the floor for two hours! We enjoyed all the experiences, the kindness and helpfulness of the people wherever we went and would love to see more of Japan.

Janice & Stu

MILITARY SELF-DEFENCE Training for civilians



Mondays 7.30-9pm
Starts 4th Aug
- 5 sessions
Marohemo Hall
Whakapirau Rd
\$80 per person

CONTACT

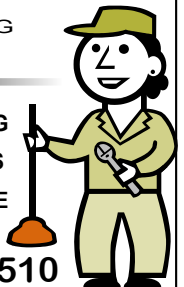
Jamie Ewen 027 274 3362
james.ewen2@gmail.com

LIMITED SPACES - BOOK EARLY

Ross Murphy Plumber

CERTIFYING
PLUMBER

NEW HOUSING
RENOVATIONS
MAINTENANCE



09 431 7510
021 424 252

Big Thanks from Paparoa Hall

A big boost to Hall funds: KDC management appreciate our efforts to maintain the Hall for our community and have granted \$10,000 (of the \$25,000 required) from the Annual Plan 'Community Assistance Policy - Capital Grants', towards resealing the carpark. KDC will also cover the cost of insurance this year for the 13 community halls recently handed back to community organisations to run. This is very pleasing indeed.

In addition to this help, we are receiving wonderful responses to our call for donations from OUR COMMUNITY – thank you all very much for contributing already - and for your contributions coming soon. We would like to continue the interior re-paint to complete brightening of the hall.

Remember, the more the hall is used, the happier the committee is. Contact Robyn 431 7306 with any enquiries as to how we can cater to your needs, or if you have a good idea as to how we can source further funding for the carpark.

The Hall AGM is scheduled for Monday 11th August at 7.30pm - no prizes for guessing where!

SKELTON'S

WINTER SALE ON



30% OFF all
Winter fashion

bring this ad in
to receive an extra
10% off your sale
purchases

Skelton's Paparoa Drapery

Mon-Fri 8.30am to 5pm Sat 9am to noon

Ph 431 7306

Steakhouse

Ruawai Pizza Bar & Steakhouse

OPEN 6 days
Tuesday thru Sunday from 4pm

- Gourmet pizzas
- Steaks from \$20

Bookings preferred
09 439 2928

Mondays are available by
pre-arranged booking

KidsCan NZ - YOU ROCK!

Attached is a photo of our Senior Room (Room 1) kitted out in all their gear given by KidsCanNZ.

Every child has received: 1 rain-coat, 1 pair shoes, 2 pairs socks and a pair of trousers from KidsCanNZ. We are part of the KidsCanNZ programme which supports schools decile 1-4. Paparoa Primary School is a decile 4.



Our students were overjoyed, excited and very grateful to receive this gear. **KidsCanNZ – YOU ROCK!** We would like to say a huge thank you to KidsCanNZ for all that they do for our school and ask everyone to link onto their website www.kidscan.org.nz and support this fantastic charity. We believe that they deserve so much more publicity than they get. You can also link through the School website.

Paparoa Motor Camp



check out
our
self-contained
cottages

- Tent and Van sites, Cabins, Kitchen, Showers
- Internet available
- Public Laundry facilities
- Pump-out Station

Ph 09 431 6515

cnr SH12 and Pahi Road, Paparoa

HOOK LINE & SINKER



It is a bit cooler out there (need to dress warmly), and fewer boats can be seen out fishing. There are still a few fish around but it needs a bit of patience and if no bites after half an hour move on to another spot. Snapper, kahawai and gurnard are still being caught, those caught are a nice size.

For his own information Gravy has been tagging and releasing some fish. If you catch a tagged fish, please email us here at paparoapress@orcon.net.nz and we'll let Gravy know, it will give an idea of how long they stay in the Kaipara. Gravy



Busy Term for Paparoa Primary School

This term will be a busy and exciting time at Paparoa Primary School as we introduce two new programmes that will enhance our children's lifelong learning, continue with developing our Enviroschools programme, and get creative by designing and making tails to link in with our local Wearable Arts Gala.

READING TOGETHER is a workshop based programme that was developed in the early 1980s. Workshops will be held with parents and caregivers of 15 of our school's families during weeks 1, 2, 3 and 7. The workshops aim at providing parents with a range of skills and strategies they can use at home to help support their children with their reading. For more information visit www.readingtogether.net.nz

PROJECT ENERGIZE is run by Sport Northland and the Northland District Health Board. It aims to improve children's physical activity and nutrition. For the next year we will be supported by Petrina, our 'Energizer'. Petrina will assist staff in developing activities to suit each class's needs, as well

as working directly with the children. For more information go to www.sportnorthland.co.nz

ENVIROSCHOOLS PROGRAMME

continues to be developed and we hope to further establish our orchard and vegetable gardens. Each class will adopt two raised beds to look after with the remaining two beds being dedicated to strawberries – perfect for sharing in Term 4.



POSSUM PURGE The School PTA annual Possum Purge is not far away either, so start getting your teams ready for the action - September 11-14.



MANGROVES, MVD & THE KAIPARA:

Neville Rosengren has kindly provided the following references:

SOME REFERENCES AND DATA SOURCES- FREE OF CHARGE MAPS & AERIAL PHOTOGRAPHS FROM LAND INFORMATION NEW ZEALAND <http://www.linz.govt.nz/topography> The LINZ Data Service provides access to the most current Topo50, Topo250 and Topo500 map information released by LINZ in both digital image (map) and data formats, and aerial photographs

INSTITUTE OF GEOLOGICAL & NUCLEAR SCIENCES LIMITED (Geological Maps & Reports

EDBROOKE, S.W. (compiler) 2001: Geology of the Auckland area:

EDBROOKE, S.W.; BROOK, F.J. (compilers) 2009: Geology of the Whangarei area

CRISP, P., DANIEL, L. & TORTELL, P. (1990). Mangroves in New Zealand-trees in the tide. GP Books, Wellington, 69 p.

GRAHAM, I. J. (editor) (2011) A Continent on the Move. New Zealand Geoscience into the 21st Century. Geological Society of New Zealand ISBN9781877480003

MAKEY, L.J. (2010). Information Review and Gap Analysis. Phase One. The Kaipara Atlas. An Integrated Database. Integrated Kaipara Harbour Management Group. Environs Holdings Ltd. 558 pp. www.Kaiparaharbour.net.nz

MORRISEY, D.J.; BEARD, C.; MORRISON, M.A.; CRAGGS, R.; LOWE, M.L. (2007). The New Zealand mangrove: review of the current state of knowledge. Auckland Regional Council Technical Publication Number 325. 156 p

MORRISON, M.A.; LOWE, M.L.; JONES, E.G.; MAKEY, L.; SHANKAR, U.; USMAR, N.; MILLER, A.; SMITH, M.; MIDDLETON, C. (2014). Habitats of particular significance for fisheries management: the Kaipara Harbour. New Zealand Aquatic Environment and Biodiversity Report No. 129. 169 p. <http://www.mpi.govt.nz/news-resources/publications.aspx> [http://fs.fish.govt.nz/go-to/Document library/Research reports](http://fs.fish.govt.nz/go-to/Document%20library/Research%20reports)

NATIONAL INSTITUTE OF WATER & ATMOSPHERIC RESEARCH LTD (2011) Patterns and rates of recent sedimentation and intertidal vegetation changes in the Kaipara Harbour. Prepared for Auckland Council & Northland Regional Council November 2011. (NIWA Project: ARC10224)

WHAT'S ON - AUGUST 2014

Anglican Church St Marks 1st, 2nd & 4th Sundays 10am, Hook Road, Paparoa
 Ararua Church 10.30am every Sunday, All welcome ph 431 6622
 Art Group Paparoa Sun 10th Aug, Helen Budd's Studio, ph 431 6192
 Art Studio, Ruawai Mon 10-12noon; Tue 7-9pm, ph Frances 439 2554
 Arty Farties • Summer Markets 9am-noon, opposite Village Green
 • Thur/Fri in the 'Tile Shed' ph Anne on 431 6229 to enquire
 • Crafty Kids Club alt Saturdays 10-2pm, Rm 5 Paparoa Primary School
 • Beginners Patchwork Group, Mon 7pm, Te Pahi River Drive
 Badminton Thurs, years 5-11, 5.30pm; older/experienced 7pm, Paparoa Hall
 Crafternoons 1st & 3rd Wed in month, 1-4pm, Tinopai Hall ph Lyn 431 6090
 Exercise to Music Tue 10.30am Paparoa Hall \$5 ph Rose 431 7418
 Farmers' Market Fortnightly Sat 9-noon, Village Green Aug 9, 23; Sep 6, 20
 Fire Force 1st & 3rd Monday in month 6.30pm Depot Rd ph Cohan 431 6668
 Gardening Club 2nd Wed of month, ph Lea 431 6296
 Grey Power Last Wed in month, 2pm, Hall next to Resthome, M'gto
 Indoor Bowls Paparoa Hall ph Loraine 431 7290 or Robyn 431 7306
 Kaipara Art Awards Exhibition Sep 6 - Oct 5; entries by 29 Aug, see page 2
 Kaiwaka Movies 1 Aug *Twelve Years a Slave* 7.30pm; 3 Aug *How to Train Your Dragon* 2pm; 15 Aug *Philomena* 7.30pm; 22 Aug *Saving Mr Banks* 7.30pm
 Library Mon 1.30-4.30pm, Wed 10am-12noon, Thu 1.30-4.30pm, Fri 9.30am-1pm
 open all Farmer's Market days - alternate Saturdays 9.30-1pm
 Line Dancing Thurs 10.30am Paparoa Hall ph Rose 431 7418
 Mainly Music Wed 9.30am Paparoa Comm Church, ph Rebecca 431 7550
 Matakahe Music Makers 2nd Tues in month 7.30pm @ Cruiser Bar & Grill
 Northtec Horticulture Thurs, Community Church, Hook Rd, ph 021 0230 6465
 Otamatea High School Arts Festival Thu 21 Aug 7.30pm School Hall, see pg 9
 Otamatea Quilters 1st Tue/mnth 7pm & 3rd Mon 10am, Paparoa Hall 09 439 2262
 Paparoa Community Church 10.30am every Sunday, Hook Road
 Paparoa Hall - AGM Mon 11 Aug, 7.30pm, Paparoa Hall. Everyone welcome
 - Functions venue ph Robyn 431 7306 or a/h Loraine 431 7290
 Paparoa Lions Dinner Meetings 3rd Mon in month 6.30pm, Sports Pavilion
 Paparoa Playcentre Tue & Fri 9.30-12noon Visitors welcome ph Tina 021 033 5128
 Paparoa Plunket Society Coffee Group 1st Tue/month, 10am Franklin Rd
 Paparoa Primary School Term 3 Jly 21-Sep 26; Term 4 Oct13-Dec11
 Paparoa Toy Library Wed 10.30-1pm, Paparoa Comm Church, Hilery 431 7330
 Possum Purge 11-14 Sep to register ph school 431 7379, prizegiving Sun 14th
 Rugby - JMB 4-14 years, Thur 4.30pm Paparoa Showgrounds ph 431 7028
 Selwyn Centre Thurs 10am for over 65's, St Marks, Hook Rd, ph 431 8193
 Sports Pavilion - Community Dinner Sat 30 Aug, ph Vickie 431 6432
 - Functions venue, ph Vickie Owens 431 6432 for bookings
 St Mary's Catholic Church 10am Wed, 6pm Sat, Maungaturoto
 Tai Chi Tues 11am, Sports Pavilion, Showgrounds ph Shirley 431 6408
 Table Tennis Tues 7.30pm, Sports Pavilion \$2 Pete 431 6822
 Tennis Courts open all winter, no set sessions. Non members \$2. Ph Sue 431 6224
 Ukelele Players Beginners / experts, Thur 4pm Matakahe, ph Dennise 431 7012
 WAG14 Fri 22 & Sat 23 Aug, Paparoa Hall, 3 shows to choose from see pg 1
 Waka Ama Tues & Thur evenings 5pm, Sunday 10am, Pahi Domain
 Yoga Paparoa Sports Pavilion Mon & Wed 8.30am, Thur 5.30pm, ph 09 280 9694
PLEASE UPDATE US WITH YOUR DETAILS: paparoapress@orcon.net.nz PP

From the Archives

The very first edition of Paparoa Press in Spring 1996 talked about new businesses in town. A reopened Farm Supplies shop, Tyre Shop, Graphic Design business, and the former council building was being used as office space. Other businesses were a new Garden Centre, an Art Shop & Gallery with an upcoming Market Day in October. There was also mention of increasing rural subdivision with new residents bringing their skills to the district. Of the 19 original advertisers only 5 are still in business in 2014. They are – Paparoa Dairy, Skelton's Drapery, Sheppard Electrical, Paparoa Motors and Gum Diggers. But of course new businesses have also filled the gap. PP

Otamatea Community Services

- The times they are a-changing ...

Otamatea Community Services (OCS) Manager Denise Meiklejohn will 'bow out gracefully' in August from a job which she's been passionate about for seven years. During that time, there've been big changes to the organisation and the services it offers to Kaipara communities from Mangawhai to Matakahe.

When CYFS advised the need to provide a Professional Counselling Service, the OCS office in Hurndal Street rented additional space and now employs a male and a female counsellor.

PACE worker Gail Blythen subsequently developed the PACE programme into a complete home-based Parent Coach Service.

Today the annual client base has risen to over 100, the Seniors' monthly meals cater for around 50-60 older folk, and the services offered range from Family Support and Parent Coaching to Counselling. A Funding/Administrator is also employed so the Agency remains financially sustainable – a position from which Elizabeth Ludlam has recently retired. Help for rural families who face unemployment is an ongoing challenge; last year, in collaboration with Te Roroa Learning Assistance, OCS were delighted to open a pre-employment computer training facility next door.

Denise's passion to see the agency provide professional services amongst our rural communities is sure to remain a reality.



Paparoa's Gail Blythen delivers PACE programme at OCS

Community Directory

EMERGENCY: FIRE ■ POLICE ■ AMBULANCE dial 111

COAST TO COAST HEALTH CARE

Maungaturoto Medical Centre: 8am-5pm Mon-Fri 09 431 8576
 Paparoa Clinic: Doctor Tue + Fri 8.30am-12.30pm..... 09 431 7222
 For urgent after hours medical service (Wellsford)..... 09 423 8086
DISTRICT NURSE Dargaville Hospital 09 439 3330
 Healthline - 24 hour service..... 0800 611 116
HOSPICE KAIPARA Dargaville Hospital 09 439 3330
KAIPARA DISTRICT COUNCIL Helpline 0800 727 059
 Mangawhai Office..... 0800 100 388
LINKING HANDS Health Shuttle Service, Maungaturoto 09 431 8969
LIONS CLUB PAPAROA Secretary Alistair Banks 09 431 6373
MAUNGATUROTO CHIROPRACTIC..... 09 431 8019
MAUNGATUROTO PHARMACY..... 09 431 8045
MAUNGATUROTO REST HOME 09 431 8696

OTAMATEA COMMUNITY SERVICES Community House 09 431 9080

PAPAROA LIBRARY Membership free-of-charge, Wheelchair access
 Mon 1.30-4.30pm, Wed 10am-12noon, Thu 1.30-4.30pm, Fri
 9.30am-1pm. Open Market days - alternate Saturdays 9.30-1pm

PAPAROA PLAYCENTRE Vanessa 09 431 6731, Renee 09 431 6336

PAPAROA PLUNKET Cynthia Keay..... 09 431 8187
 PLUNKET Helpline 0800 933 922

PAPAROA PRIMARY SCHOOL 09 431 7379

PARENT PORT Inc. free help for families Linda 09 425 9357

PHYSIOTHERAPY Lyndsay Bargh Mon/Wed/Fri from 8am...431 8576

PODIATRIST / FOOTCARE Jayne Short 020 4022 65998 / 09 431 7188

PUKE ARANGA TE KOHANGA REO 09 431 7089

YOUTH & WHANAU FOCUS South Kaipara, Rose 09 431 7418

CAR REPAIRS**Cam's Autos**

For all mechanical repairs and warrants of fitness. We service cars, 4WDs, trailers & utes.



Paparoa Valley Road
Ph 09 431 6620

FRESH & FROZEN
Oysters, Mussels,
Fish & Kina


10am - 5.30pm
1994 Paparoa Valley Rd
09 431 6089

REX BROWNE CONTRACTING

- Limestone & Metal Cartage
- Truck & Digger Hire
- Farm Roads
- Earthwork & Dams
- House Sites & driveways
- Wrapped Silage & Hay
- Cultivation
- Fencing & Mulching



Maize Silage
planting & harvesting

☎ 09 431 7556
☎ 021 720 590

New A&P Show committee members

from left:

Gary Christie,
Gerard Sullivan,
& Elaine Christie

ORT's Wonderful Wizard Of Oz

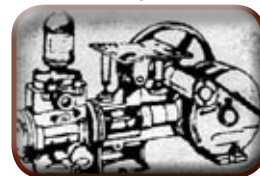
Otamatea Repertory Theatre staged a delightful rendition of this popular musical over three weekends in July. The singing was wonderful, from the youngest performers to the more mature voices. The songs are demanding and even more challenging on cold nights. The children were inspirational with their enthusiasm and spontaneous smiles. How they managed to keep warm in those costumes was a mystery, but they all sang and performed so well.

We need to thank all who contributed to this excellent production. Warwick Simpson was his very musical self and Peter Flower is to be congratulated on role selection. Dorothy was outstanding, singing in tune all evening and the Witches, both Good and Wicked, were perfect. The Lion was extremely entertaining and well supported by an energetic Tin Man and a very convincing Scarecrow.

An enchanting evening for audience and cast alike; our young people are fortunate to have this nurturing outlet for their artistic talents, thank you ORT. PP

NEEDHAM PUMP SERVICES

For all Water Pump Supplies & Repairs



09 431 8235

Ross 027 669 4464
Daryl 027 271 1961

32 Whaka Street, Maungaturoto

PAINTER

Dave Stephenson

- Interior
- Exterior
- Roofs
- Mould spraying
- Waterblasting

No job too small

09 431 6623
027 490 3522

100-to-1 triumph at Quiz Night

Winning team at the **Paparoa School PTA Quiz Night** 28 June, 100 to 1
from left: Diane & Richard Moore, Eileen Parsons, Terri Donaldson, John Bruce

HOME HEATING INSTALLER

Flue sweeps
Repairs
Installations

Ken Subritzky

from
Dargaville to Wellsford

09 431 7477
021 121 4879

kensub548@gmail.com

5 Questions for ... John Muskett

How long have you been in Paparoa? *Two years now but we have been around the area for over twelve.*

Why did you come to Paparoa? *We were in Maungaturoto while the kids were growing up but had moved to jobs in Taupo when they left home. It was time to come back to the country and an area we really liked.*

Where are you from? *I was raised in Howick/Pakuranga and had love of food so it has become my career.*

What were you doing before? *I spent seven years in the Air NZ flight kitchens preparing inflight meals. In 1988 I went to the Brisbane Expo where I met my wife Carolyn. We backpacked around Australia with the kids and ended up in Spain for a couple of years. Back in NZ we continued in the food business with positions at Huka Falls, and Wairaki Golf Course. I was Functions Chef doing a lot of corporate functions. Carolyn and I have run our own catering company catering for up to 50 weddings a year. Recently I've been at Kaipara Kumara developing new kumara products.*

What are you doing now? *We still do a number of weddings and private functions but the café is an opportunity to meet people, do something in the community and a base for other activities. We have a polyhouse at home and will grow some of our ingredients. We are keen on using natural and local foods. You will notice we have ditched the soft drink fridge in favour of juices and teas.*



John Muskett - at the Village Cafe